

44/33

# LOGGERS' RUN COMMERCIAL PLAT

BEING A PORTION OF ORIOLE COUNTRY, A P.U.D.

A PARCEL OF LAND SITUATE IN SECTIONS 23 AND 26, TOWNSHIP 47 SOUTH, RANGE 41 EAST, PALM BEACH COUNTY, FLORIDA, BEING A REPLAT OF A PORTION OF TRACT "M", BOUNDARY PLAT OF ORIOLE COUNTRY A P.U.D., ACCORDING TO THE PLAT THEREOF AS RECORDED IN PLAT BOOK 32, PAGES 175 THROUGH 180 OF THE PUBLIC RECORDS OF PALM BEACH COUNTY, FLORIDA.

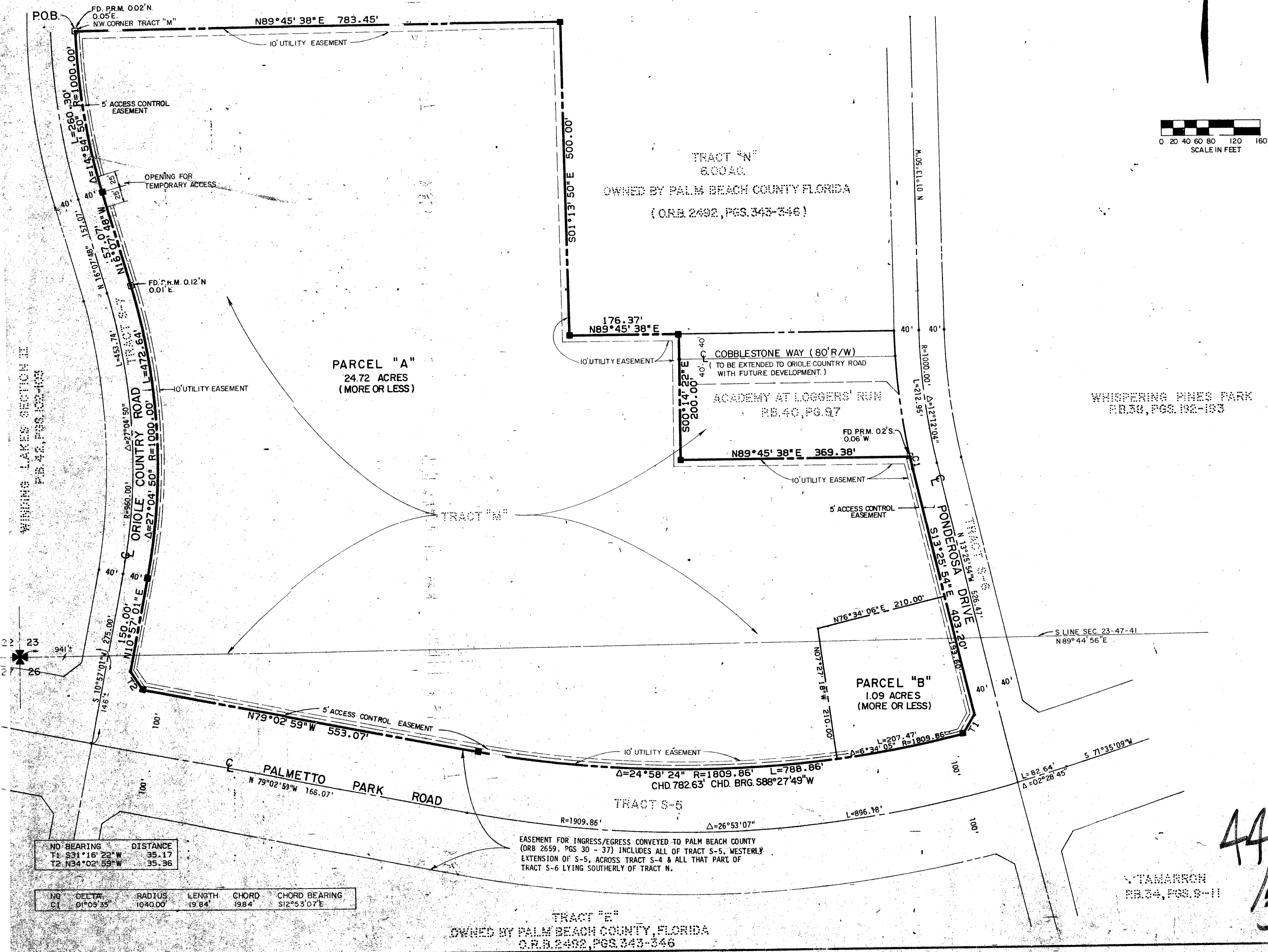
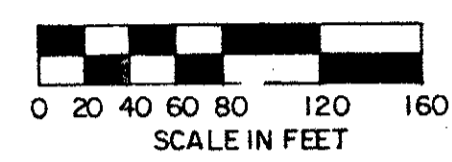
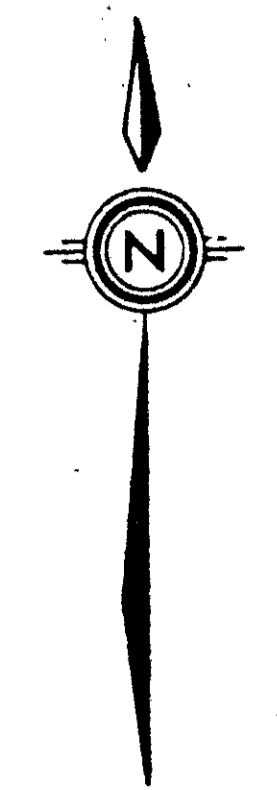
# 33

STATE OF FLORIDA  
COUNTY OF PALM BEACH  
THIS PLAT WAS FILED FOR  
RECORD AT \_\_\_\_\_  
THIS DAY OF \_\_\_\_\_  
AD, 1982 AND DULY RECORDED  
IN PLAT BOOK \_\_\_\_\_ ON PAGES  
\_\_\_\_\_ AND \_\_\_\_\_  
JOHN B. DUNKLE, CLERK  
CIRCUIT COURT  
BY \_\_\_\_\_ DC.

TRACT 37, FLORIDA FRUITLANDS CO. SUB.  
PB. 1, PG. 102

JANUARY, 1982

SHEET 2 OF 2



PARCEL "A"  
24.72 ACRES  
(MORE OR LESS)

PARCEL "B"  
1.09 ACRES  
(MORE OR LESS)

EASEMENT FOR INGRESS/EGRESS CONVEYED TO PALM BEACH COUNTY  
(ORB 2659, PGS 30 - 37) INCLUDES ALL OF TRACT S-5, WESTERLY  
EXTENSION OF S-5, ACROSS TRACT S-4 & ALL THAT PART OF  
TRACT S-6 LYING SOUTHERLY OF TRACT N.

0275-307

44/33

NO	BEARING	DISTANCE
T1	S31°18'23"W	35.17
T2	N34°02'59"W	35.36

NO	DELTA	RADIUS	LENGTH	CHORD	CHORD BEARING
C1	01°05'35"	1040.00'	19.84'	198.4'	S12°53'07"E

Meridian Surveying and mapping inc. WEST PALM BEACH, FLORIDA

DRAWN	TS & MEH	DATE	JAN. 1982
CHECKED		SCALE	1" = 80'
DRAWING NO.	81-P-1087		

LOGGERS' RUN COMMERCIAL PLAT

TRACT "E"  
OWNED BY PALM BEACH COUNTY, FLORIDA  
O.R.B. 2462, PGS 343-346